



Control Equipment Limited





Control Equipment Limited

Established in 1982 we offer the complete spectrum of low voltage switchgear products



- Main distribution boards**
- Packaged sub stations**
- Withdrawable motor control centres**
- Variable frequency drives**
- Control panels**
- Final distribution boards**
- Power factor correction**

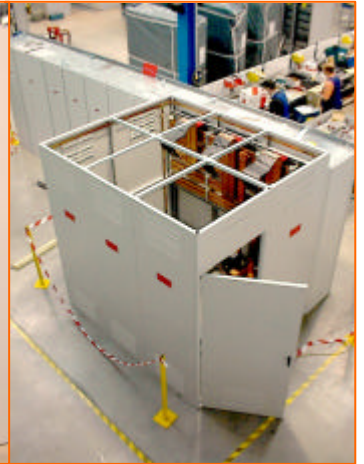
ISO 9001 accredited





Control Equipment Limited

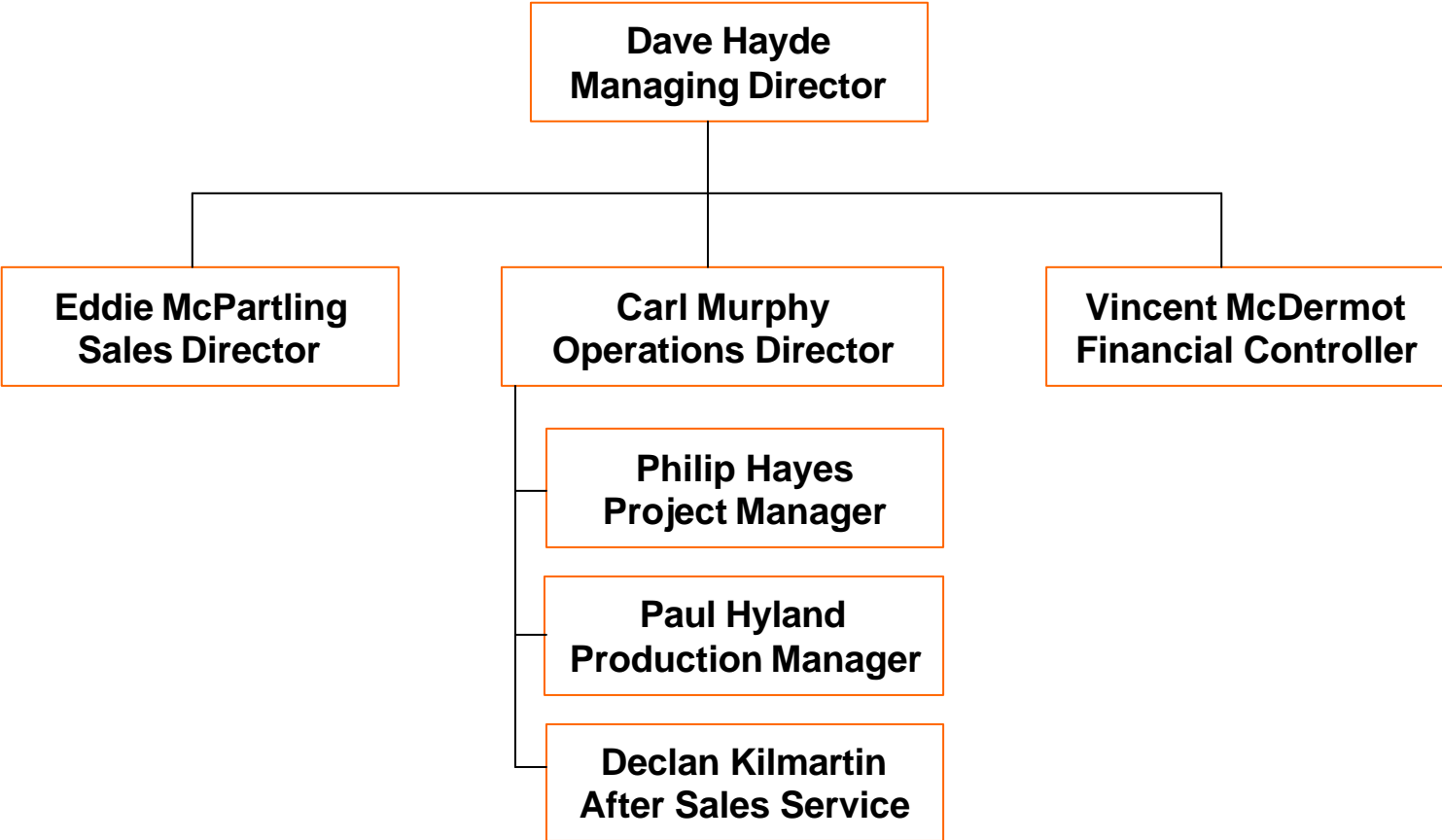
Our new 23000 sq ft manufacturing facility in Citywest Dublin





Control Equipment Limited

Company structure





Control Equipment Limited

We are currently processing orders for the following clients



ConocoPhillips

Merck Sharpe & Dohme

Pfizer

Novartis

EarthTech

Guinness

Dairygold

Takeda

Oil / petrochemical

Pharmaceuticals

Pharmaceuticals

Pharmaceuticals

Water treatment

Food and drink

Food and drink

Biotech





The MNS system – official licensee

Official licensee for the MNS low voltage switchgear system





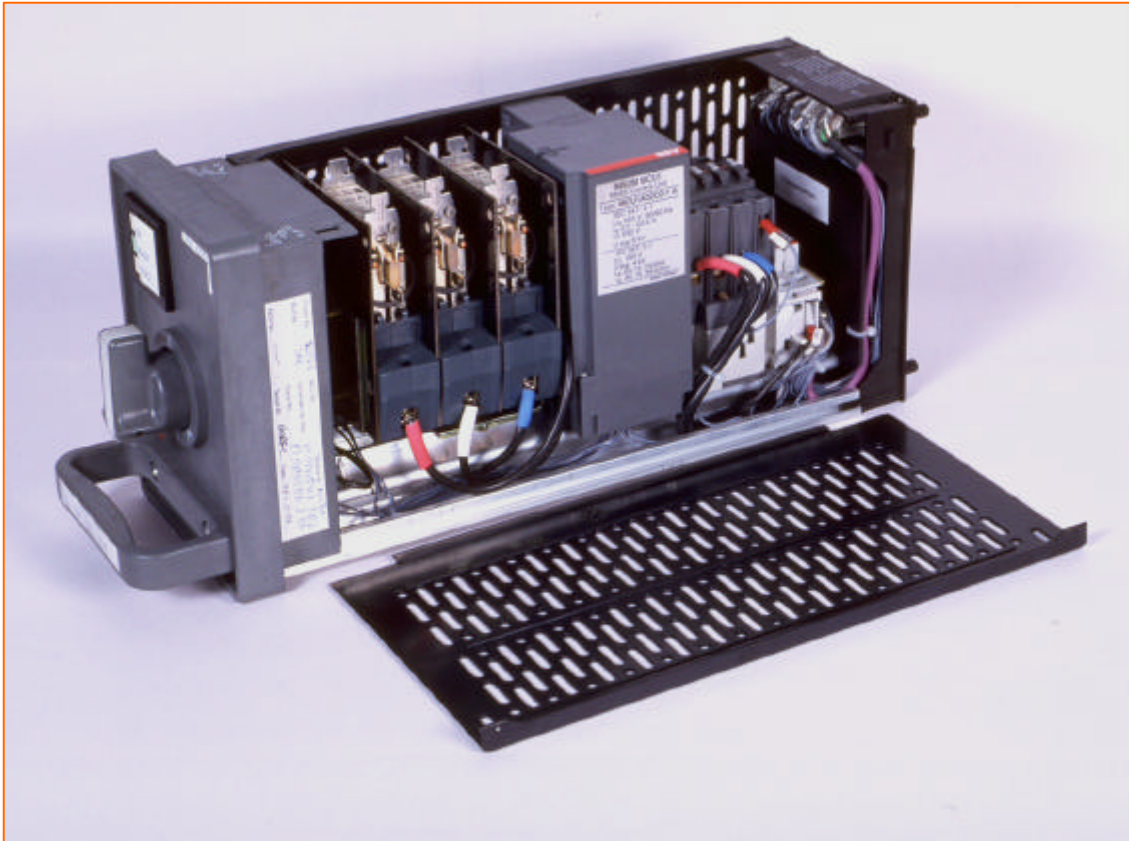
The MNS system - technical data

| Technical data | |
|--|----------------------------|
| Rated voltages | |
| Insulation voltage U_i | 1000V 3 phase 50 / 60Hz |
| Rated operating voltage U_e | 690V 3 phase 50 / 60HZ |
| Rated impulse voltage | 8kV |
| Rated currents | |
| Current rating | up to 6300A |
| Short time withstand current I_{cw} | 86kA (100kA max) |
| Peak withstnd current I_{pk} | 165kA (250kA max) |
| Mechanical charectaristics | |
| Surface protection | Alu-zinc coated |
| Plastic components | Halogen and CFC free, self |
| Standards | |
| Fully type tested assembly in accordance with EN 60439-1 (IEC 439-1) | |
| Resist internal arc EN 61641 (IEC 1641) | |



The MNS system - withdrawable

Fully withdrawable motor starters





The MNS system – fully type tested

Fully type tested LV switchgear from CEL



