



Control Equipment Ltd  
4056 Kingswood Drive  
Citywest Business Campus  
Dublin 24  
Ph + 353 1 6420700  
Fax + 353 1 4660573  
Site@cedl.ie  
www.controlequipment.ie

# CEL Site Services

CEL provides a wide range of on site services including modifications or additions that may be required to new or existing switchgear.

In addition, through our network of site engineers we can provide an extension programme of preventative maintenance to include the following -



**Annual Maintenance of Switchboards**

**Thermal Imaging**

**Air Circuit Breakers testing and maintenance**

**Automatic Generator Change-over system testing and Maintenance**

**Electrical Power Quality Analysis**

**Power factor Correction Equipment Maintenance**

# CEL Site Services

## Annual Maintenance of Switchgear

CEL provides a comprehensive programme of maintenance for low voltage switchgear including thermal imaging, change over and ACB testing and PFC maintenance. Maintenance provides information on the equipment and highlights potential problems before they become critical.

## Thermal Imaging

Thermal imaging of switchboards and distribution boards can highlight areas of concern well before they become a problem. By identifying these areas, repairs and maintenance can be scheduled rather than having to carry out emergency works in the event of a breakdown.

## Air Circuit Breakers testing and Maintenance

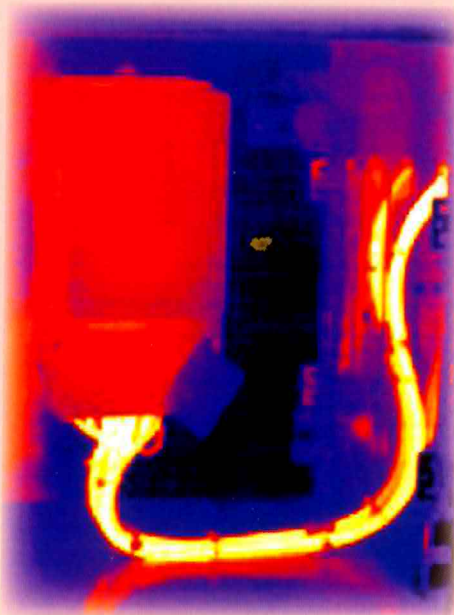
Air Circuit Breakers like all other mechanical devices need to be exercised periodically to ensure that they don't freeze up. CEL provides a comprehensive testing service for ACBs. ABB ACBs releases can be tested using the dedicated electronic test device PR010/T. In addition to this all ACBs can be tested via secondary injection of current.

## Automatic Generator Change-over system testing and Maintenance

CEL provides a testing and maintenance programme for change-over equipment to ensure readiness in the event of a power outage.

## Power Quality Analysis

With so many power electronic devices connected to the network today, there can be problems with harmonic distortion. CEL provides a monitoring service for your incoming power supply.





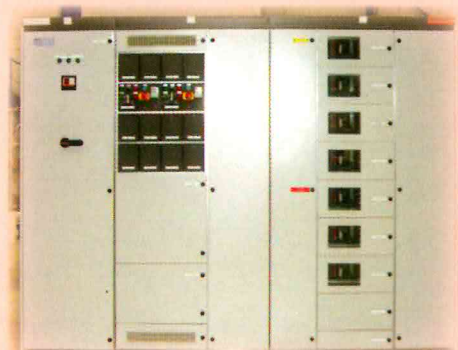
The following electrical values can be monitored and recorded

Voltage,  
Current,  
Power Factor,  
Energy usage –  
Actual,  
Apparent & Reactive,  
Harmonics,  
Transients,  
Over Voltages,  
Inrush Current,  
Unbalance

### **Power Factor Correction Equipment Maintenance**

Power factor is the relationship between the amount of Actual load Power (KW) consumed and Apparent load Power (KVA) consumed. It is a measure of how effectively the current is being converted into useful work output and more particularly is a good indicator of the effect of the load current on the efficiency of the supply system. The ESB penalise customers with a power factor of less than 0.97. It therefore, makes economic sense to maintain the equipment that saves you from this charge.

CEL can survey this equipment, to ensure that you are getting the best correction for your load.





**CEL**

**CONTROL  
EQUIPMENT  
LIMITED**

Control Equipment Ltd  
4056 Kingswood Drive  
Citywest Business Campus  
Dublin 24  
Ph + 353 1 6420700  
Fax + 353 1 4660573  
Email : [site@cedl.ie](mailto:site@cedl.ie)  
[www.controlequipment.ie](http://www.controlequipment.ie)